



RENOFIX 740

STRUCTURAL ABRASIVE MORTAR
FOR EXTERNAL AND INTERIOR AREAS

Please follow the technical instructions!

AREA OF APPLICATION:

Renofix 740 is a modern building material of high qualities (refined mortar CR CS II-W1, EN 998-1) applied on external and internal areas.

COMPOSITION:

- Moisturized lime
- White cement
- White marble sand

FEATURES:

- Pigmented and of clean colour
- Finishing mortar of fine structure
- Environmentally-friendly
- High vapour permeability

BASE PREPARATION:

The base must be dry and cleaned from dust. Renofix 740 may be applied onto the entire base mortars (lime, cement or gypsum) only once these have been completely dried. All bases, gypsum boards or smooth concrete surfaces need to be previously coated with Renofix 5 white / Renofix 18 construction glue.

MORTAR PREPARATION:

Pour a bag of Renofix 740 into 6.3-6.7 litres of clean water and mix it with a mixer until it becomes a homogenous mass. Stir shortly again after 10 minutes.

PROCESSING AND PROCESSING CONDITIONS:

The mortar is applied with a stainless steel trowel. It is structured by an appropriate felting parget made of polystyrene or plastic. **It must not be used at temperatures lower than +5°C.** It is not to be mixed with other materials.



WARNING:

Contains slacked lime and white cement. Irritates the skin and the eyes. In case of skin contact, rinse with clean water, and in case of contact with the eyes, seek medical assistance.

DELIVERY:

Renofix 740 is delivered in 25 kg paper bags protected against moisture.




STORAGE:

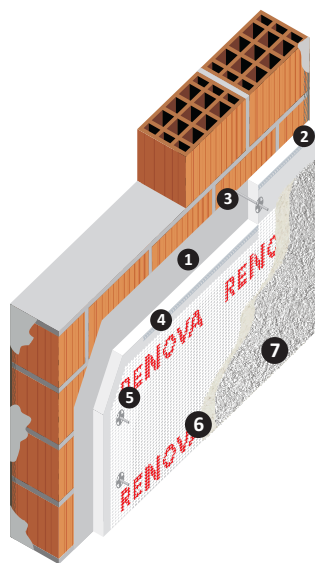
To be stored in dry space, on top of wooden pallets. Storage time – 6 months.

Technical data :	
Product no.:	5319990620248
Product code:	1742 1743
Bags on a pallet:	42

RENOFIX 740

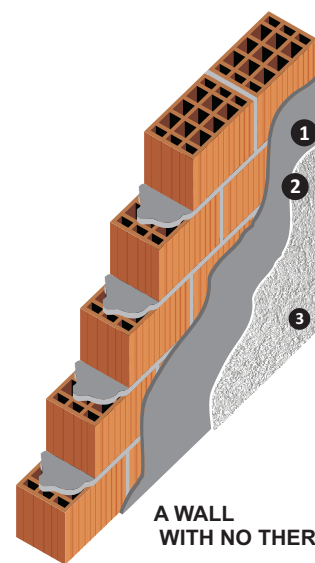
Granulation:		2 mm	2 mm	3 mm
Amount of water required:	6,3-6,7 l./Thes			
Decorative material structure:		R	V	R
Colour:	IN COLOUR			
		8 -9 m ² /EH	8 -9 m ² /EH	6 -9 m ² /EH
Consumption:		2,8 -3,2 kg/m ²	2,8 -3,2 kg/m ²	4 -5 kg/m ²
Note:	Consumption figures are approximate and depend to a large extent on the base and installation method			
Dry material density:	ca. 1450 kg/m ³			
Heat conductivity (EN 1745:2002):	ca. 0,54 W/mK			
Special heat capacity:	ca. 1 J/kgK			
pH - vrednost	ca. 12			
Hardness under pressure for 28 days (EN 1015-11):	ca. 2,2 N/mm ²			
Water permeability (EN 1015-18):	< 0,2 kg/m ² h			
Reaction to fire (EN 1015-11):	A 1			
MG (EN 998-1):	CR CS II W1			

General instructions: All data about the material cease to be valid following the issuance of the above list. These are the data resulting from our current analyses. No legal obligation may arise from these data. The RENOVA products, as well as all raw materials contained in them are subject to constant, continuous tests to ensure constant and same level quality. Our technical advisers are at your disposal for any inquiries regarding the application, processing, and presentation of our products. You may find our current data at www.renova.com.mk, as a  document or ask for them in the retail shops.



- 1 RENOFIX 5
- 2 Polystyrene or min. wool
- 3 Polystyrene joints
- 4 RENOFIX 5 WHITE
- 5 Reinforcing net
- 6 RENOFIX 5 WHITE
- 7 RENOFIX 740 - 2,3. mm

A WALL WITH THERMO-ISOLATION



- 1 RENOFIX 10
- 2 RENOFIX 18
- 3 RENOFIX 740

A WALL WITH NO THERMO-ISOLATION

RENOVA PUTZ | www.renova.com.mk

RENOVA Dzepeiste, Tetovo, Makedonija | Tel.: 044 487 300 | Fax: 044 487 200 | info@renova.com.mk
 RENOVA Gureza, Uroševac, Kosovo | Tel.: 00381 290 323 311 | Fax: 00381 290 396 396 | renova_ferizaj@hotmail.com
 RENOVA Vore, Tirana, Albanija | Tel.: 00355 48 301 909 | Fax: 00355 48 301 908 | renova.tirana@hotmail.com