

RENOFIX 700

MINERAL STRUCTURAL MORTAR (ABRASIVE) FOR WALLS

Please follow the technical instructions!

AREA OF APPLICATION:

Mineral construction material for comfortable and healthy living. Renofix 700 is a modern building material of high qualities. It is a mineral structural coating mortar for external and internal areas, applied on base mortars or polystyrene and previously processed with Renofix 18 or Renofix 5 white.

COMPOSITION:

- Moisturized lime
- White cement
- White marble sand

FEATURES:

- Brilliant white colour
- Excellent performance qualities
- Finishing mortar of fine structure
- Environmentally-friendly

BASE PREPARATION:

The base must be dry and cleaned from dust. Renofix 700 may be applied onto the entire base mortars (lime, cement or gypsum) only once these have been completely dried. All bases, gypsum boards or smooth concrete surfaces need to be previously coated with Renofix 5 white / Renofix 18 construction glue.

MORTAR PREPARATION:

Pour a bag of Renofix 700 into 6.3-6.7 litres of clean water and mix it with a mixer until it becomes a homogenous mass. Stir shortly again after 10 minutes.

PROCESSING AND PROCESSING CONDITIONS:

The mortar is applied with a stainless steel trowel. It is structured by an appropriate felting parget made of polystyrene or plastic. **It must not be used at temperatures lower than +5°C.** It is not to be mixed with other materials.



WARNING:

Contains slacked lime and white cement. Irritates the skin and the eyes. In case of skin contact, rinse with clean water, and in case of contact with the eyes, seek medical assistance.

DELIVERY:

Renofix 700 is delivered in 25 kg paper bags protected against moisture.



STORAGE:

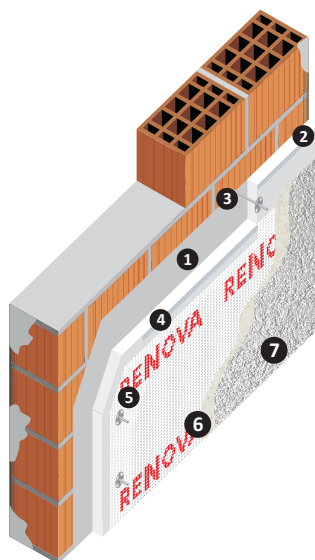
To be stored in dry space, on top of wooden pallets. Storage time – 6 months.

Technical data:	
Product no.:	5319990620231
Product code:	1701 1701,5 1702 1703
Bags on a pallet:	42
Amount of water required:	6,3-6,7 l./bag

RENOFIX 700

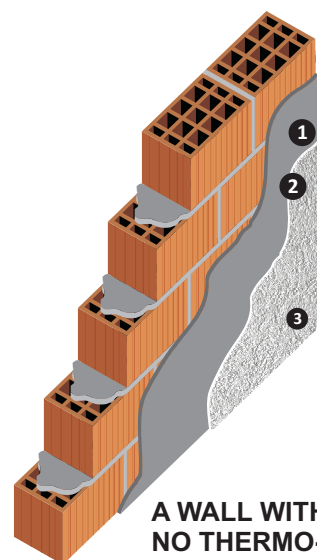
Granulation:	1 mm	1,5 mm	1,5 mm	2 mm	2 mm	3 mm
Decorative material structure:	R	R	V	R	V	R
Colour:	WHITE					
Consumption:	11 - 12 m ² /EH	10 - 11 m ² /EH	10 - 11 m ² /EH	8 - 9 m ² /EH	8 - 9 m ² /EH	6 - 7 m ² /EH
	2 - 2,1 kg/m ²	2,2 - 2,6 kg/m ²	2,2 - 2,6 kg/m ²	2,8 - 3,2 kg/m ²	2,8 - 3,2 kg/m ²	4 - 5 kg/m ²
Note:	Consumption figures are approximate and depend to a large extent on the base and installation method					
Dry material density:	ca. 1400 kg/m ³					
Heat conductivity (EN 1745:2002):	ca. 0,54 W/mK					
Special heat capacity:	ca. 1 J/kgK					
Hardness under pressure for 28 days (EN 1015-11):	ca. 1,0 N/mm ²					
Water permeability (EN 1015-18):	< 0,2 kg/m ² h					
Reaction to fire (EN 1015-11):	A 1					
MG (EN 998-1):	GP CS I W1					

General instructions: All data about the material cease to be valid following the issuance of the above list. These are the data resulting from our current analyses. No legal obligation may arise from these data. The RENOVA products, as well as all raw materials contained in them are subject to constant, continuous tests to ensure constant and same level quality. Our technical advisers are at your disposal for any inquiries regarding the application, processing, and presentation of our products. You may find our current data at www.renova.com.mk, as a PDF document or ask for them in the retail shops.



- 1 RENOFIX 5
- 2 Polystyrene or min. wool
- 3 Polystyrene joints
- 4 RENOFIX 5 WHITE
- 5 Reinforcing net
- 6 RENOFIX 5 WHITE
- 7 RENOFIX 700-1,2,3. mm

A WALL WITH THERMO-ISOLATION



- 1 RENOFIX 10
- 2 RENOFIX 18
- 3 RENOFIX 700

A WALL WITH NO THERMO-ISOLATION

RENOVA PUTZ | www.renova.com.mk

RENOVA Dzepeiste, Tetovo, Makedonija | Tel.: 044 487 300 | Fax: 044 487 200 | info@renova.com.mk
 RENOVA Gureza, Urosevac, Kosovo | Tel.: 00381 290 323 311 | Fax: 00381 290 396 396 | renova_ferizaj@hotmail.com
 RENOVA Vore, Tirana, Albanija | Tel.: 00355 48 301 909 | Fax: 00355 48 301 908 | renova.tirana@hotmail.com